

# CENTRO

LOFT LIVING REDESIGNED

## UNIT A

BEDROOM - 2  
BATH - 2

A/C	1,131 sq.ft.	105.0 sq.m.
TERRACE	42 sq.ft.	3.9 sq.m.

**TOTAL 1,173 sq.ft. 108.9 sq.m.**

Stated dimensions are measured to the exterior boundaries of the exterior walls and the centerline of interior demising walls and in fact vary from the dimensions that would be determined by using the description and definition of the "Unit" set forth in the Declaration (which generally only includes the interior airspace between the perimeter walls and excludes interior structural components). For your reference, the area of the Unit, determined in accordance with those defined unit boundaries, is 1,131 sq.ft. Note that measurements of rooms set forth on this floor plan are generally taken at the greatest points of each given room (as if the room were a perfect rectangle), without regard for any cutouts. Accordingly, the area of the actual room will typically be smaller than the product obtained by multiplying the stated length times width. All dimensions are approximate and may vary with actual construction, and all floor plans and development plans are subject to change.



# CENTRO

LOFT LIVING REDESIGNED

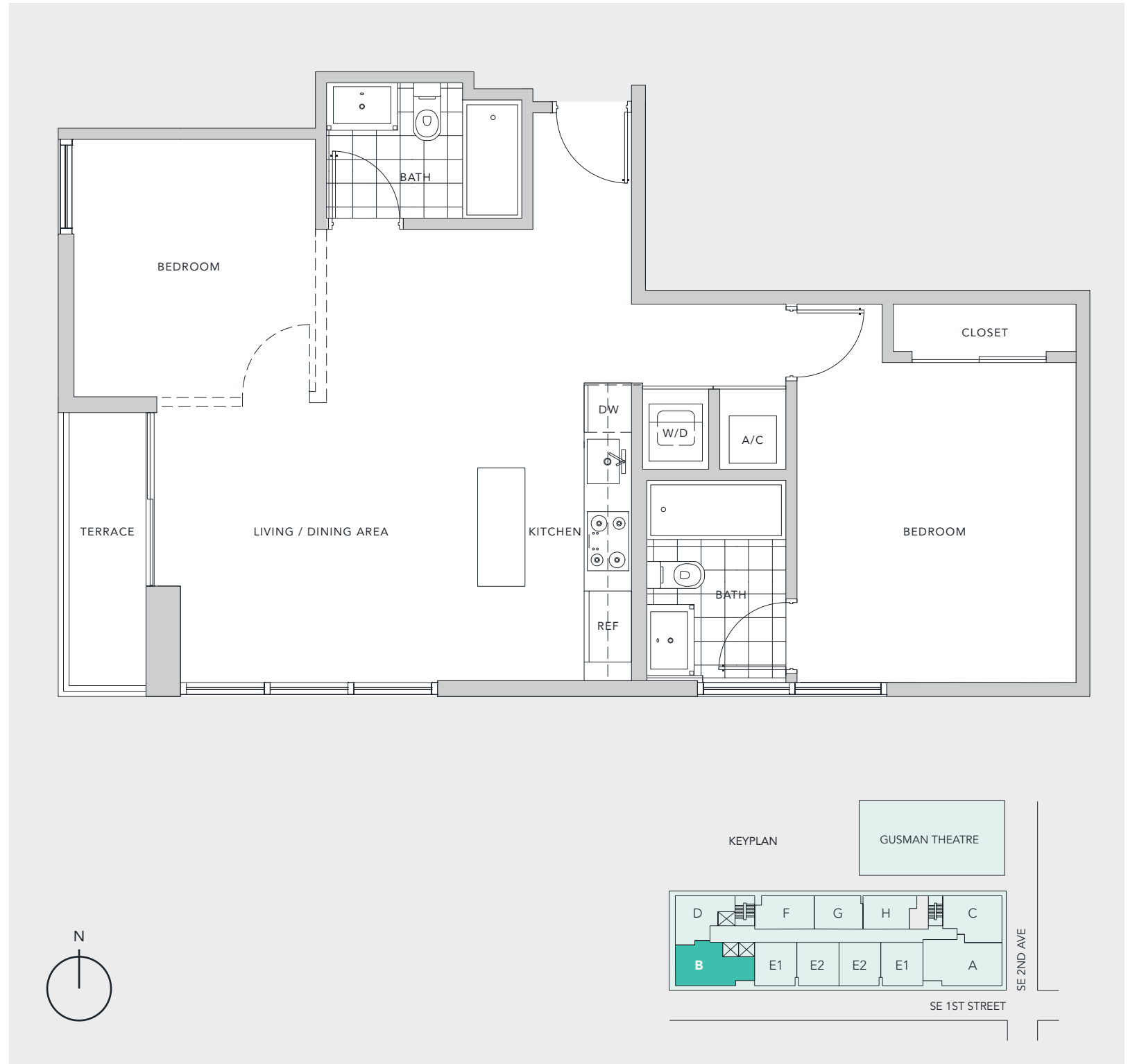
## UNIT B

BEDROOM - 2  
BATH - 2

A/C	920 sq.ft.	85.4 sq.m.
TERRACE	42 sq.ft.	3.9 sq.m.

**TOTAL**    **962 sq.ft.**    **89.3 sq.m.**

Stated dimensions are measured to the exterior boundaries of the exterior walls and the centerline of interior demising walls and in fact vary from the dimensions that would be determined by using the description and definition of the "Unit" set forth in the Declaration (which generally only includes the interior airspace between the perimeter walls and excludes interior structural components). For your reference, the area of the Unit, determined in accordance with those defined unit boundaries, is 1,131 sq.ft. Note that measurements of rooms set forth on this floor plan are generally taken at the greatest points of each given room (as if the room were a perfect rectangle), without regard for any cutouts. Accordingly, the area of the actual room will typically be smaller than the product obtained by multiplying the stated length times width. All dimensions are approximate and may vary with actual construction, and all floor plans and development plans are subject to change.



# CENTRO

LOFT LIVING REDESIGNED

## UNIT C

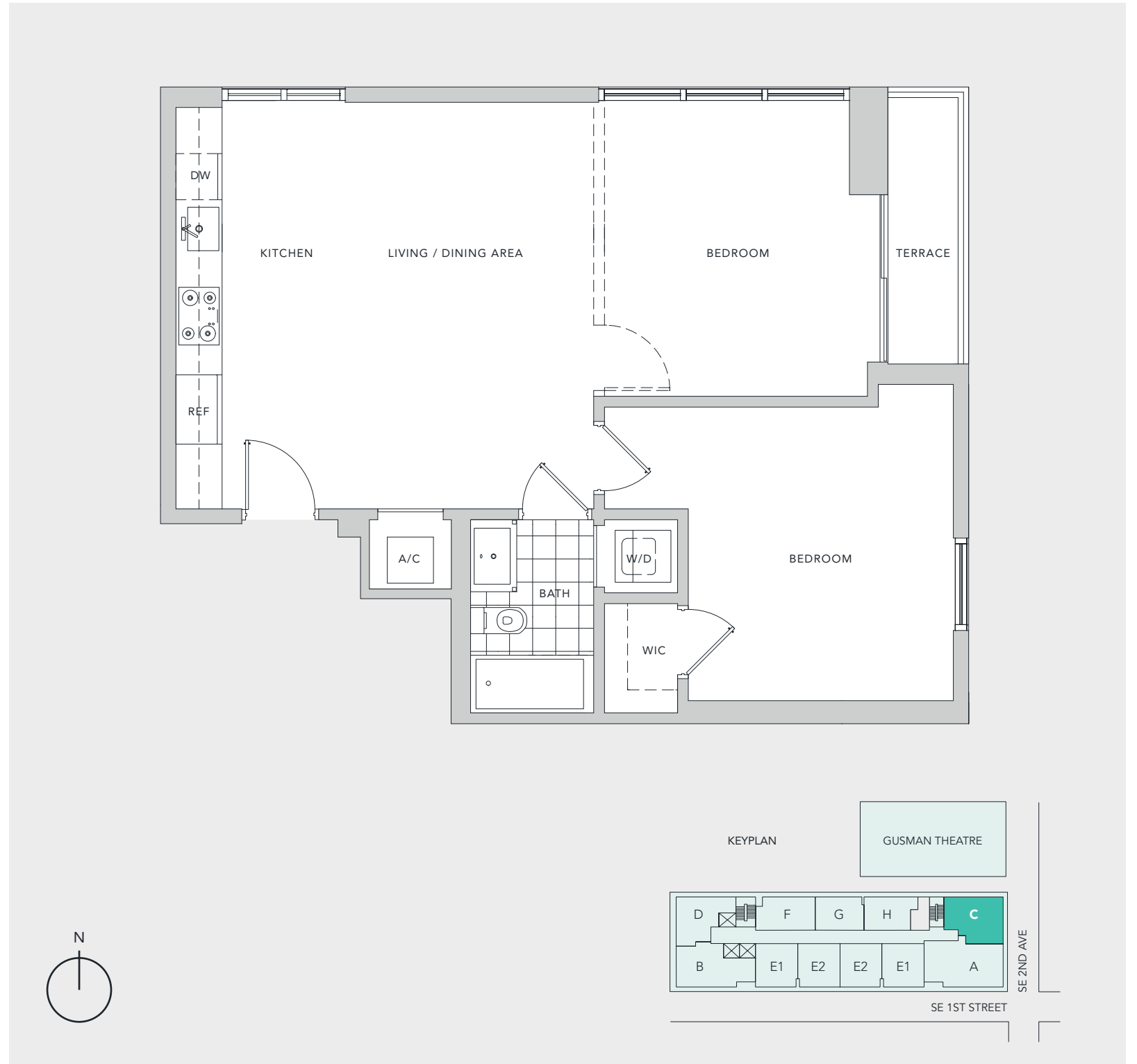
BEDROOM - 2  
BATH - 1

A/C	822 sq.ft.	76.3 sq.m.
TERRACE	42 sq.ft.	3.9 sq.m.

**TOTAL 864 sq.ft. 80.2 sq.m.**

Stated dimensions are measured to the exterior boundaries of the exterior walls and the centerline of interior demising walls and in fact vary from the dimensions that would be determined by using the description and definition of the "Unit" set forth in the Declaration (which generally only includes the interior airspace between the perimeter walls and excludes interior structural components). For your reference, the area of the Unit, determined in accordance with those defined unit boundaries, is 1,131 sq.ft. Note that measurements of rooms set forth on this floor plan are generally taken at the greatest points of each given room (as if the room were a perfect rectangle), without regard for any cutouts. Accordingly, the area of the actual room will typically be smaller than the product obtained by multiplying the stated length times width. All dimensions are approximate and may vary with actual construction, and all floor plans and development plans are subject to change.

A Forward-Thinking Development by **Newgard**



# CENTRO

LOFT LIVING REDESIGNED

## UNIT D

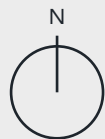
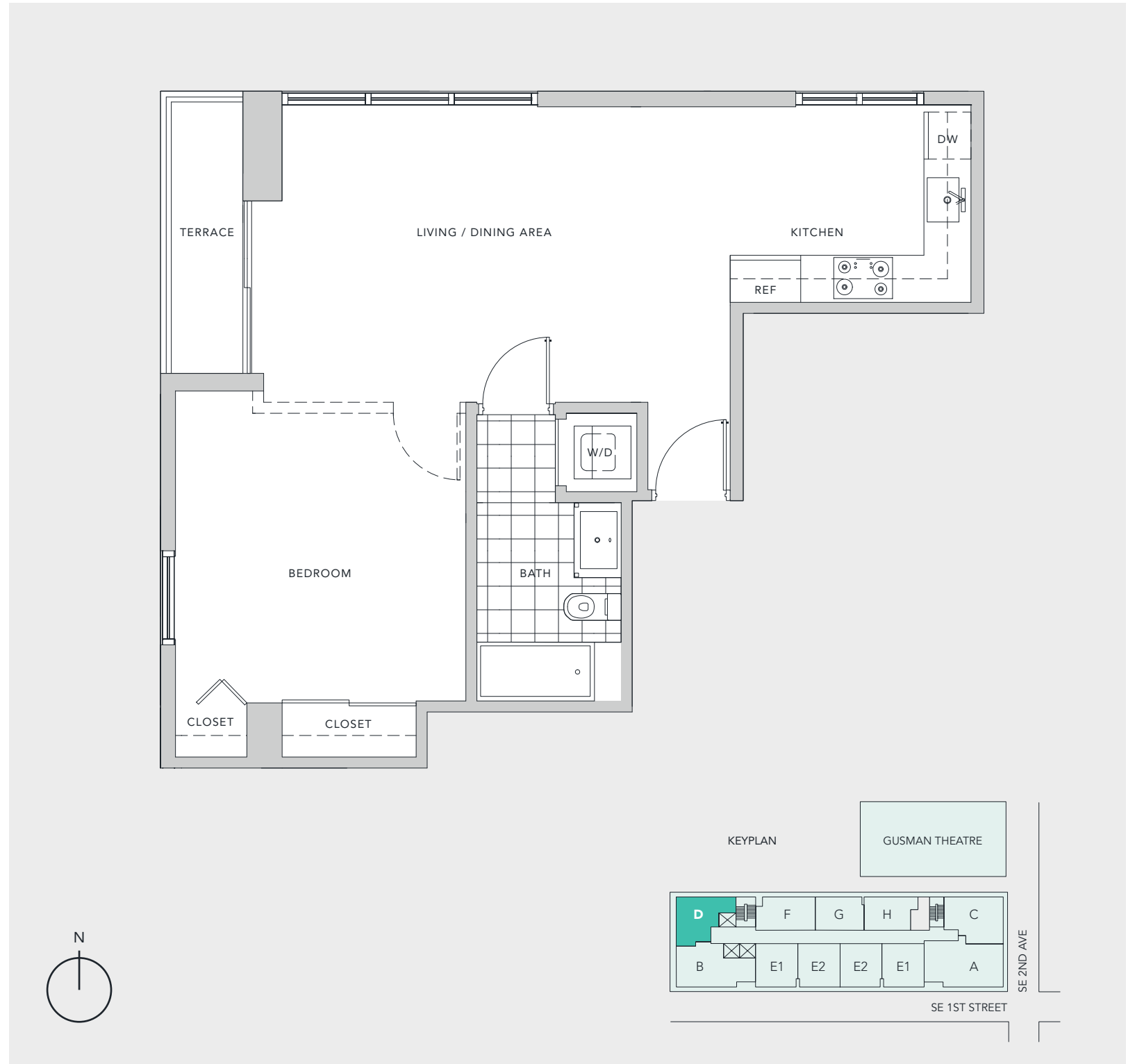
BEDROOM - 1  
BATH - 1

A/C	691 sq.ft.	64.1 sq.m.
TERRACE	42 sq.ft.	3.9 sq.m.

**TOTAL 733 sq.ft. 68 sq.m.**

Stated dimensions are measured to the exterior boundaries of the exterior walls and the centerline of interior demising walls and in fact vary from the dimensions that would be determined by using the description and definition of the "Unit" set forth in the Declaration (which generally only includes the interior airspace between the perimeter walls and excludes interior structural components). For your reference, the area of the Unit, determined in accordance with those defined unit boundaries, is 1,131 sq.ft. Note that measurements of rooms set forth on this floor plan are generally taken at the greatest points of each given room (as if the room were a perfect rectangle), without regard for any cutouts. Accordingly, the area of the actual room will typically be smaller than the product obtained by multiplying the stated length times width. All dimensions are approximate and may vary with actual construction, and all floor plans and development plans are subject to change.

A Forward-Thinking Development by **Newgard**



# CENTRO

LOFT LIVING REDESIGNED

## UNIT E1

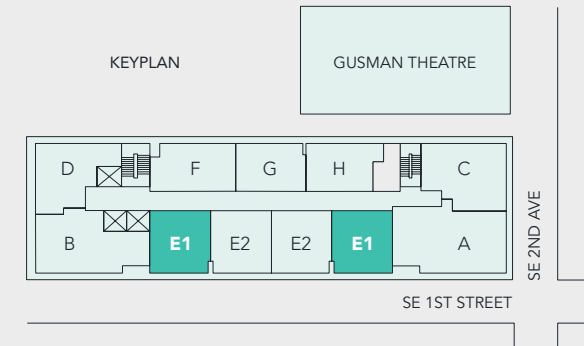
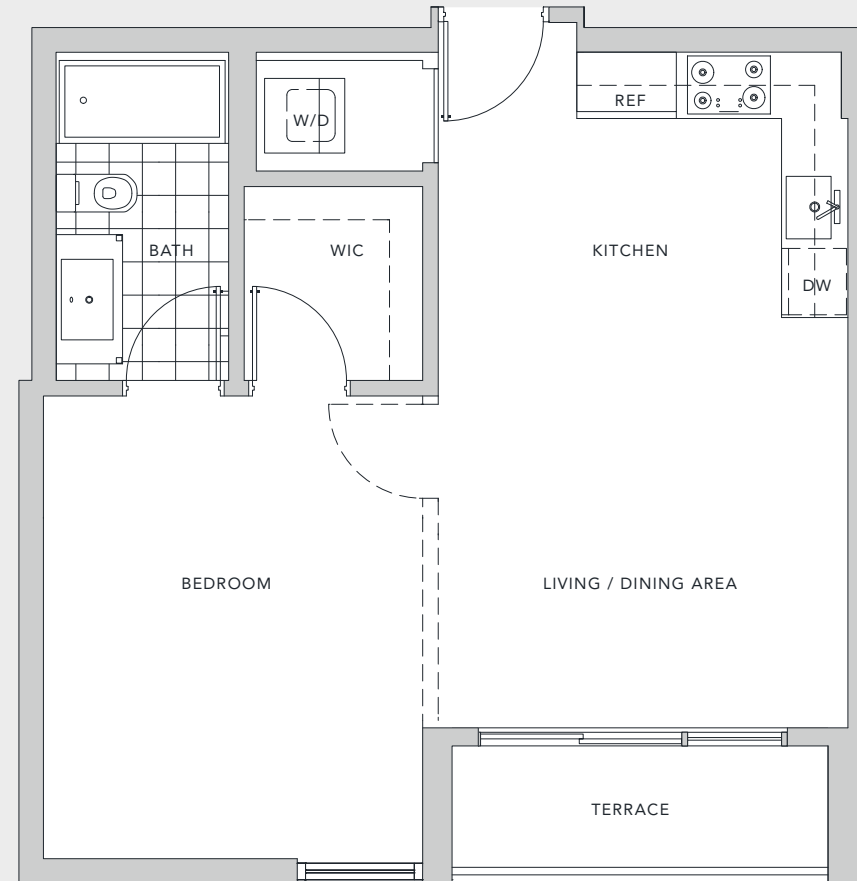
BEDROOM - 1  
BATH - 1

A/C	654 sq.ft.	60.7 sq.m.
TERRACE	49 sq.ft.	4.5 sq.m.

**TOTAL 703 sq.ft. 65.3 sq.m.**

Stated dimensions are measured to the exterior boundaries of the exterior walls and the centerline of interior demising walls and in fact vary from the dimensions that would be determined by using the description and definition of the "Unit" set forth in the Declaration (which generally only includes the interior airspace between the perimeter walls and excludes interior structural components). For your reference, the area of the Unit, determined in accordance with those defined unit boundaries, is 1,131 sq.ft. Note that measurements of rooms set forth on this floor plan are generally taken at the greatest points of each given room (as if the room were a perfect rectangle), without regard for any cutouts. Accordingly, the area of the actual room will typically be smaller than the product obtained by multiplying the stated length times width. All dimensions are approximate and may vary with actual construction, and all floor plans and development plans are subject to change.

A Forward-Thinking Development by **Newgard**



# CENTRO

LOFT LIVING REDESIGNED

## UNIT E2

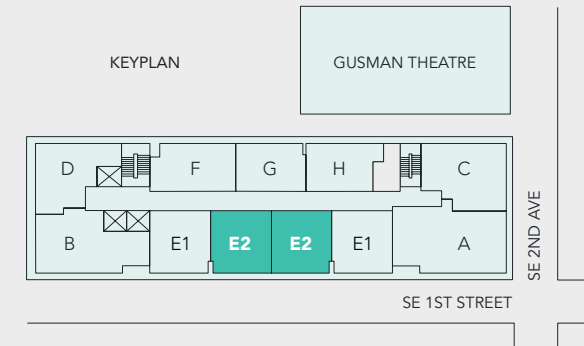
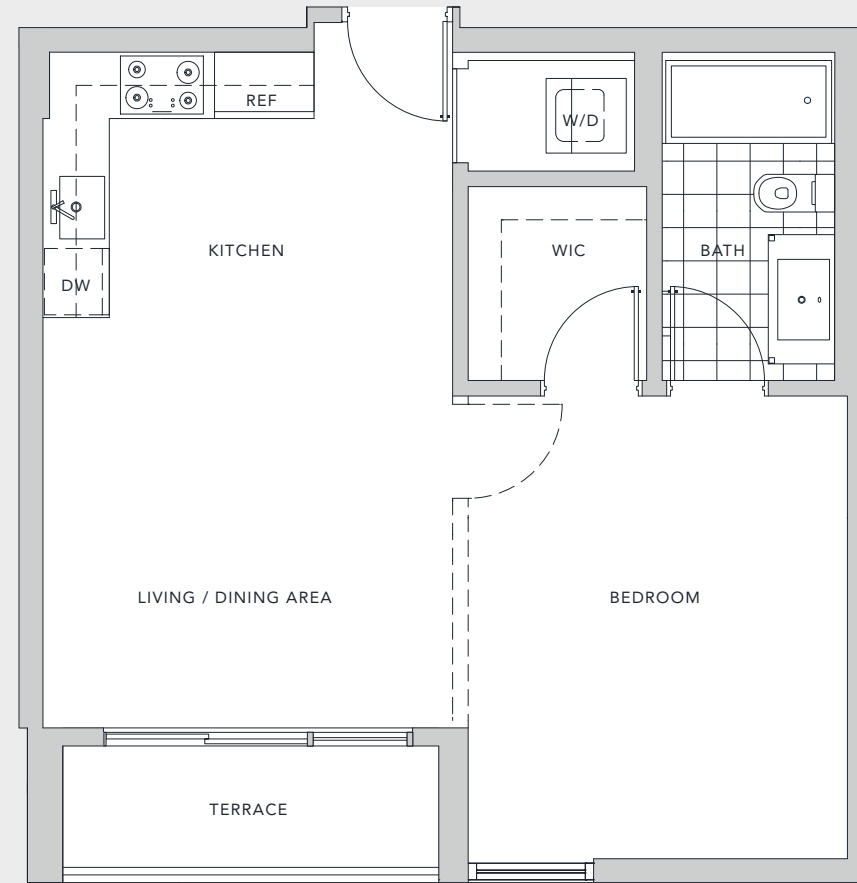
BEDROOM - 1  
BATH - 1

A/C	609 sq.ft.	56.6 sq.m.
TERRACE	49 sq.ft.	4.5 sq.m.

**TOTAL 658 sq.ft. 61.1 sq.m.**

Stated dimensions are measured to the exterior boundaries of the exterior walls and the centerline of interior demising walls and in fact vary from the dimensions that would be determined by using the description and definition of the "Unit" set forth in the Declaration (which generally only includes the interior airspace between the perimeter walls and excludes interior structural components). For your reference, the area of the Unit, determined in accordance with those defined unit boundaries, is 1,131 sq.ft. Note that measurements of rooms set forth on this floor plan are generally taken at the greatest points of each given room (as if the room were a perfect rectangle), without regard for any cutouts. Accordingly, the area of the actual room will typically be smaller than the product obtained by multiplying the stated length times width. All dimensions are approximate and may vary with actual construction, and all floor plans and development plans are subject to change.

A Forward-Thinking Development by **Newgard**



# CENTRO

LOFT LIVING REDESIGNED

## UNIT F

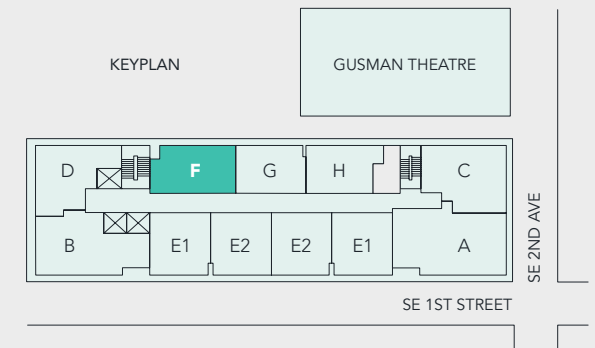
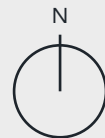
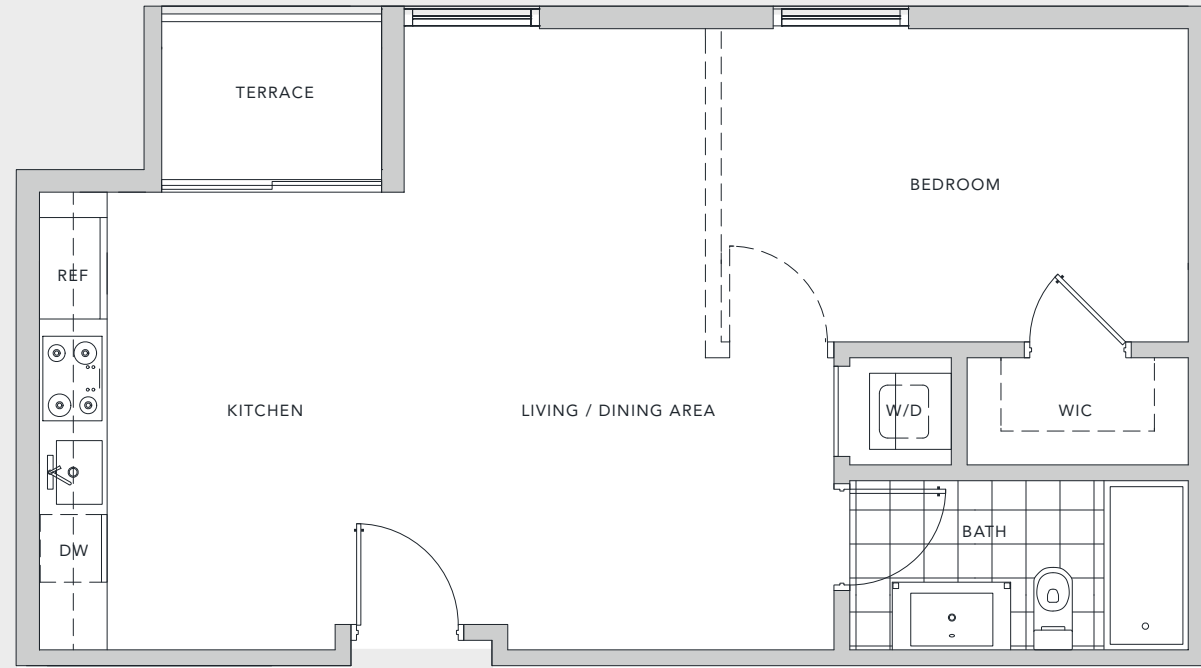
BEDROOM - 1  
BATH - 1

A/C	642 sq.ft.	59.6 sq.m.
TERRACE	31 sq.ft.	2.8 sq.m.

**TOTAL 673 sq.ft. 62.5 sq.m.**

Stated dimensions are measured to the exterior boundaries of the exterior walls and the centerline of interior demising walls and in fact vary from the dimensions that would be determined by using the description and definition of the "Unit" set forth in the Declaration (which generally only includes the interior airspace between the perimeter walls and excludes interior structural components). For your reference, the area of the Unit, determined in accordance with those defined unit boundaries, is 1,131 sq.ft. Note that measurements of rooms set forth on this floor plan are generally taken at the greatest points of each given room (as if the room were a perfect rectangle), without regard for any cutouts. Accordingly, the area of the actual room will typically be smaller than the product obtained by multiplying the stated length times width. All dimensions are approximate and may vary with actual construction, and all floor plans and development plans are subject to change.

A Forward-Thinking Development by **Newgard**



# CENTRO

LOFT LIVING REDESIGNED

## UNIT G

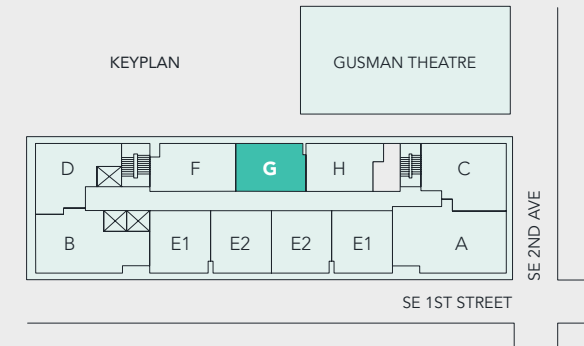
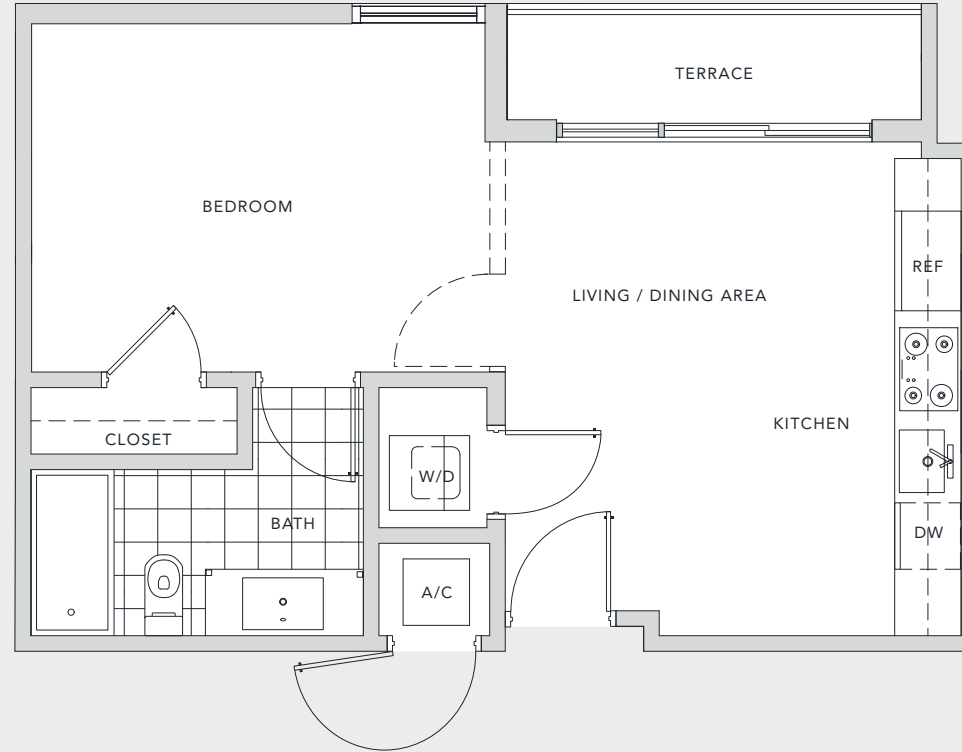
BEDROOM - 1  
BATH - 1

A/C	500 sq.ft.	46.4 sq.m.
TERRACE	44 sq.ft.	4 sq.m.

**TOTAL**    544 sq.ft.    50.5 sq.m.

Stated dimensions are measured to the exterior boundaries of the exterior walls and the centerline of interior demising walls and in fact vary from the dimensions that would be determined by using the description and definition of the "Unit" set forth in the Declaration (which generally only includes the interior airspace between the perimeter walls and excludes interior structural components). For your reference, the area of the Unit, determined in accordance with those defined unit boundaries, is 1,131 sq.ft. Note that measurements of rooms set forth on this floor plan are generally taken at the greatest points of each given room (as if the room were a perfect rectangle), without regard for any cutouts. Accordingly, the area of the actual room will typically be smaller than the product obtained by multiplying the stated length times width. All dimensions are approximate and may vary with actual construction, and all floor plans and development plans are subject to change.

A Forward-Thinking Development by **Newgard**





# CENTRO

LOFT LIVING REDESIGNED

## UNIT H

BEDROOM - 1  
BATH - 1

A/C	500 sq.ft.	46.4 sq.m.
TERRACE	46 sq.ft.	4.2 sq.m.

**TOTAL**    546 sq.ft.    50.7 sq.m.

Stated dimensions are measured to the exterior boundaries of the exterior walls and the centerline of interior demising walls and in fact vary from the dimensions that would be determined by using the description and definition of the "Unit" set forth in the Declaration (which generally only includes the interior airspace between the perimeter walls and excludes interior structural components). For your reference, the area of the Unit, determined in accordance with those defined unit boundaries, is 1,131 sq.ft. Note that measurements of rooms set forth on this floor plan are generally taken at the greatest points of each given room (as if the room were a perfect rectangle), without regard for any cutouts. Accordingly, the area of the actual room will typically be smaller than the product obtained by multiplying the stated length times width. All dimensions are approximate and may vary with actual construction, and all floor plans and development plans are subject to change.

A Forward-Thinking Development by **Newgard**

